



Boundary Process

Boundary Concept Update

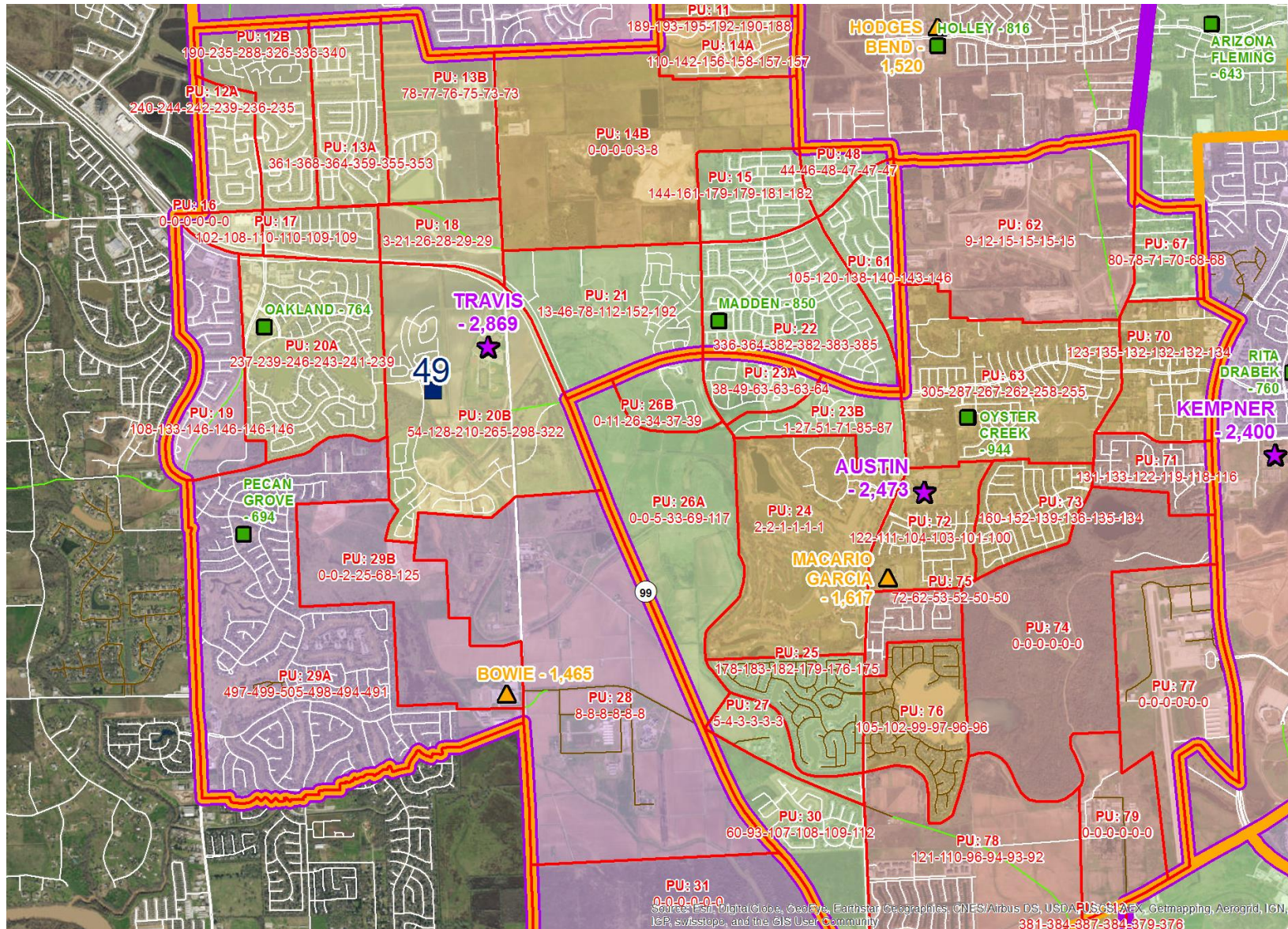
Board of Trustees Meeting 1/9/17



INSPIRE • EQUIP • IMAGINE

Process Overview

- Develop a series of potential boundary options creating boundaries for ES 48, 49, 50, 51, and MS 15.
- Collect feedback from **focus groups** to then inform options into concepts
- Present concepts to the **community for feedback**
- Analyze feedback and **provide recommendations** to the Board of Trustees – January 2017

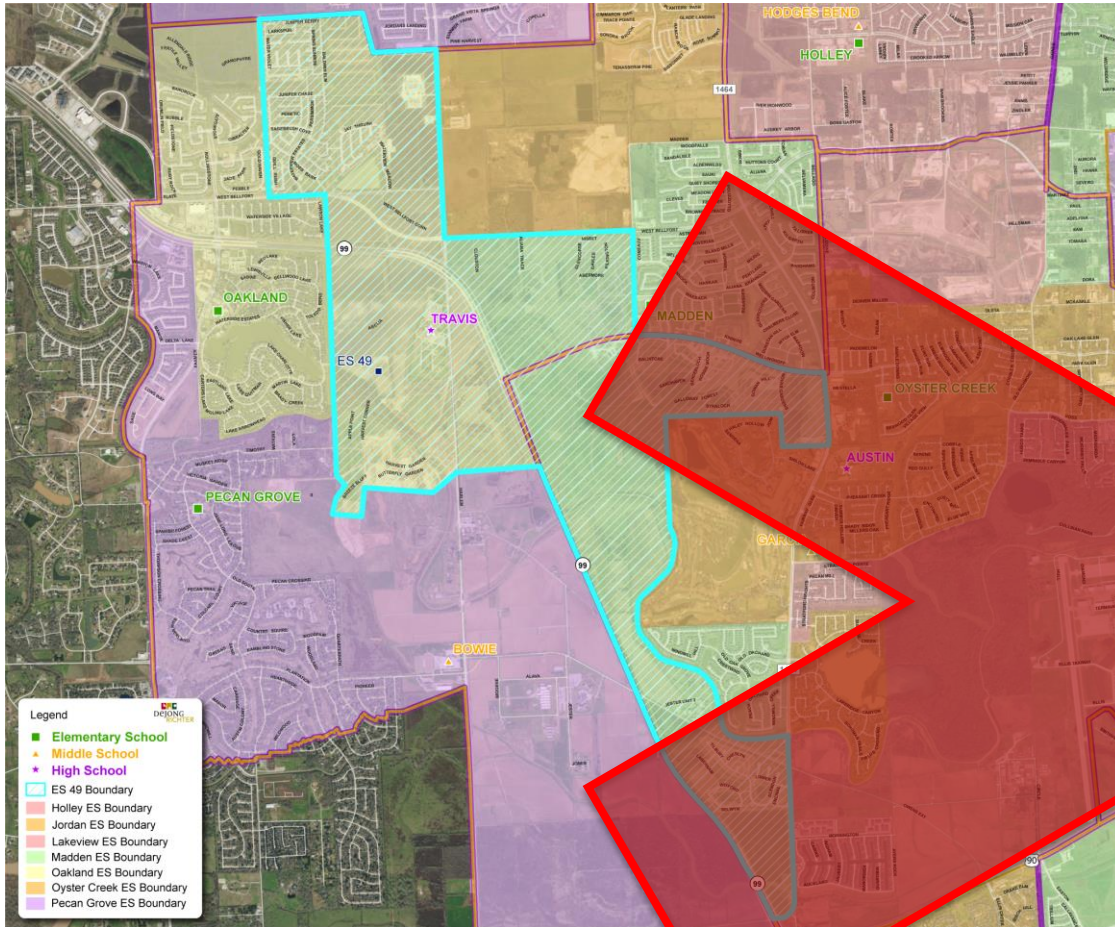


What is happening in this area?

- ES 49 in Harvest Green opens 2017-18
- 10 classroom addition at Oyster Creek comes online in 2017-18
- ES 51 @ Aliana TBD planning for 2019-20
- Utilization between Bowie and Garcia is out of balance

Permanent Capacity							Total K-5 Projected Enrollment (Includes Bilingual and ESL)						Total K-5 Projected Utilization (Includes Bilingual and ESL)					
School	2016-17	2017-18	2018-19	2019-20	2020-21	2021-22	2016-17	2017-18	2018-19	2019-20	2020-21	2021-22	2016-17	2017-18	2018-19	2019-20	2020-21	2021-22
Madden	850	850	850	850	850	850	924	1,104	1,262	1,351	1,448	1,549	109%	130%	148%	159%	170%	182%
Oakland	764	764	764	764	764	764	1,265	1,420	1,562	1,645	1,677	1,700	166%	186%	204%	215%	220%	223%
ES 49		850	850	850	850	850	0	0	0	0	0	0		0%	0%	0%	0%	0%
ES 51				850	850	850	0	0	0	0	0	0				0%	0%	0%
Total	1,614	2,464	2,464	3,314	3,314	3,314	2,189	2,524	2,824	2,996	3,125	3,249	136%	102%	115%	90%	94%	98%

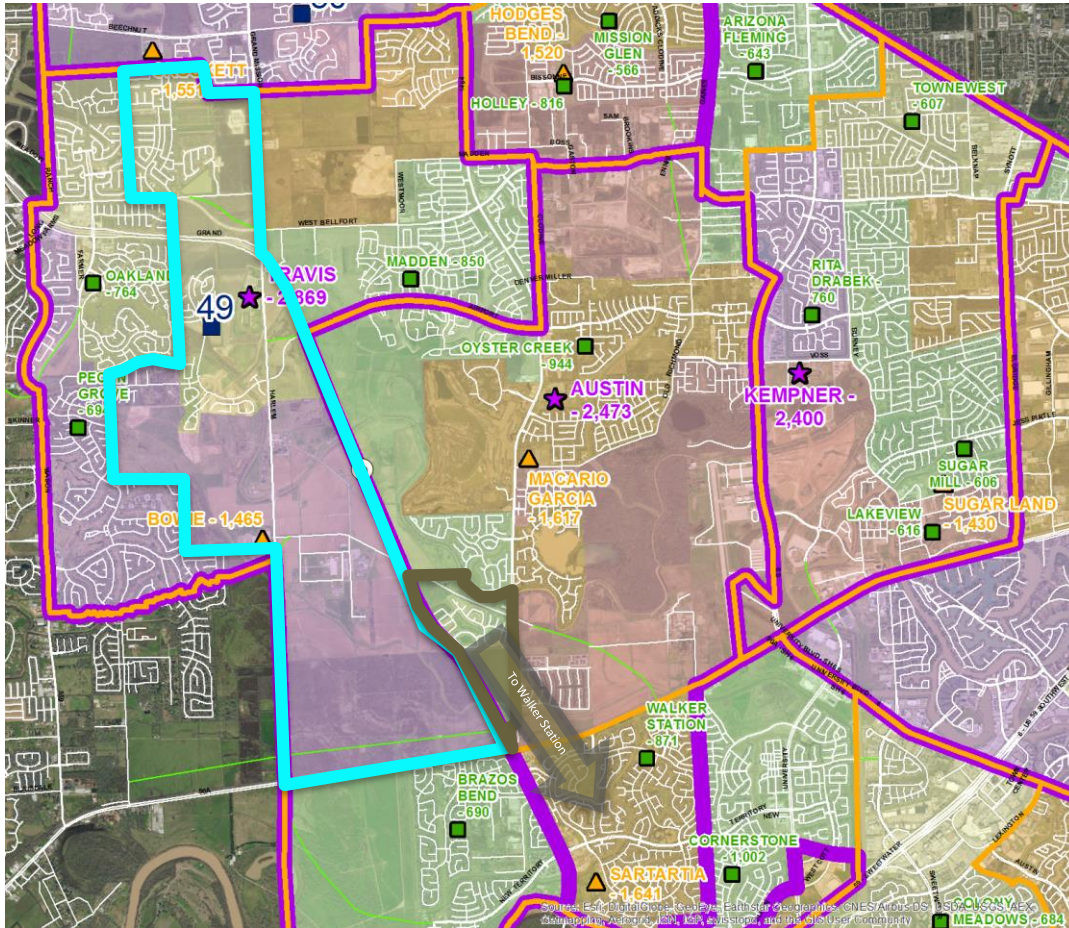
Current Boundaries		Total 6-8 Projected Enrollment						Total 6-8 Projected Utilization					
School	Permanent Capacity	2016-17	2017-18	2018-19	2019-20	2020-21	2021-22	2016-17	2017-18	2018-19	2019-20	2020-21	2021-22
Bowie	1,465	1,352	1,504	1,593	1,672	1,737	1,791	92%	103%	109%	114%	119%	122%
Garcia	1,617	980	956	955	977	1,002	1,019	61%	59%	59%	60%	62%	63%
Total	3,082	2,332	2,460	2,548	2,649	2,739	2,810	76%	80%	83%	86%	89%	91%



Considerations

- Immediate relief for both Oakland and Madden by moving students into ES 49.
- Madden has a maximum capacity including portables of 952.
- The core spaces for ES 49 are built for 1,000 students and the site can handle more portables than Madden.
- All students moved from Madden to ES 49 in Phase I, would move to ES 51 in Phase II.

School	Total K-5 Projected Enrollment (Includes Bilingual and ESL)			See Phase II	Total K-5 Projected Utilization (Includes Bilingual and ESL)			See Phase II
	2016-17	2017-18	2018-19		2016-17	2017-18	2018-19	
Madden	924	874	929	See Phase II	109%	103%	109%	See Phase II
Oakland	1,265	826	886		166%	108%	116%	
ES 49	0	824	1,009			97%	119%	
ES 51	0	0	0					
Total	2,189	2,524	2,824		136%	102%	115%	



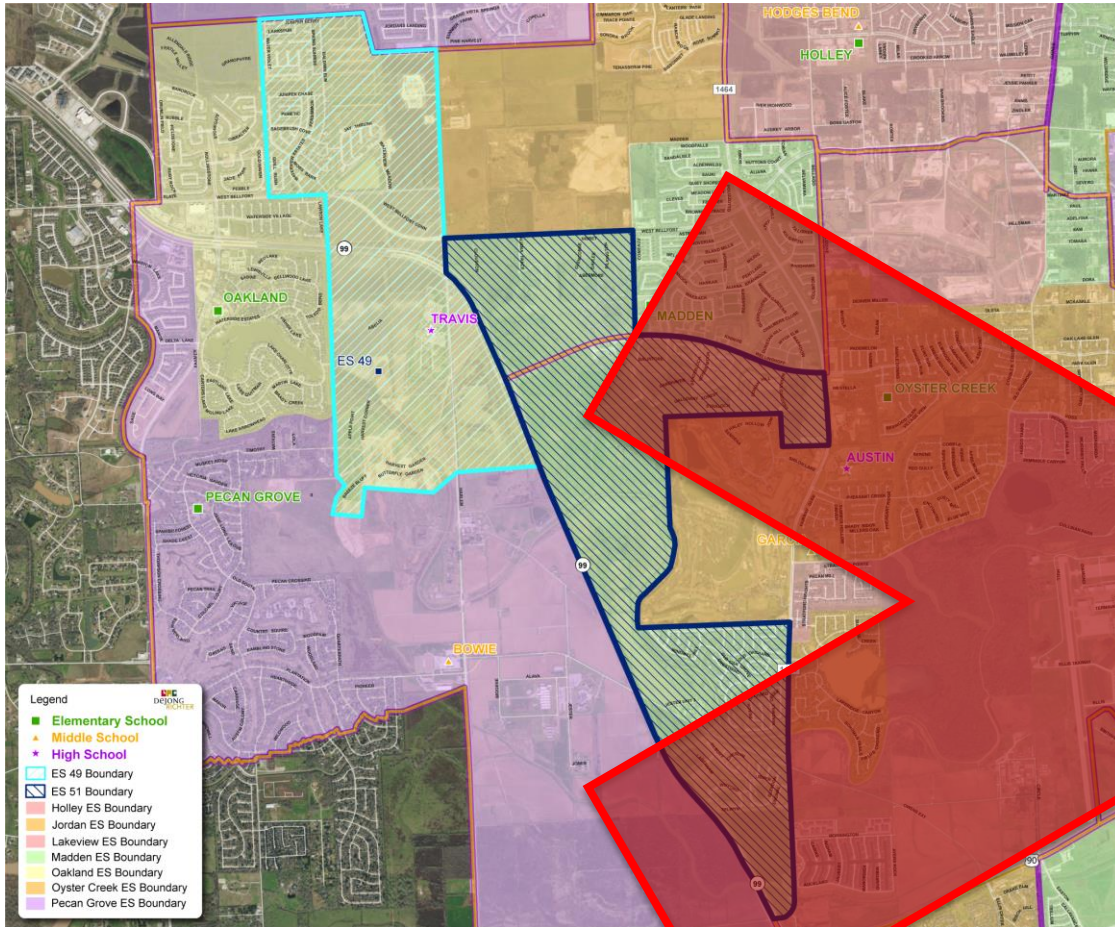
Considerations

- Students moved via attendance boundary change out of Madden are moved to Walker Station -> Sartartia (Windsor Estates and area directly north of Owens Rd. and south of Old Orchard)
- Remaining Madden may overflow 55 students in 17-18
- Remaining Madden may overflow 145 more students in 18-19 for a total of 200 over two years.
- Provides flexibility for 2019-20 when ES 51 opens.
- Phase II TBD 2018-19

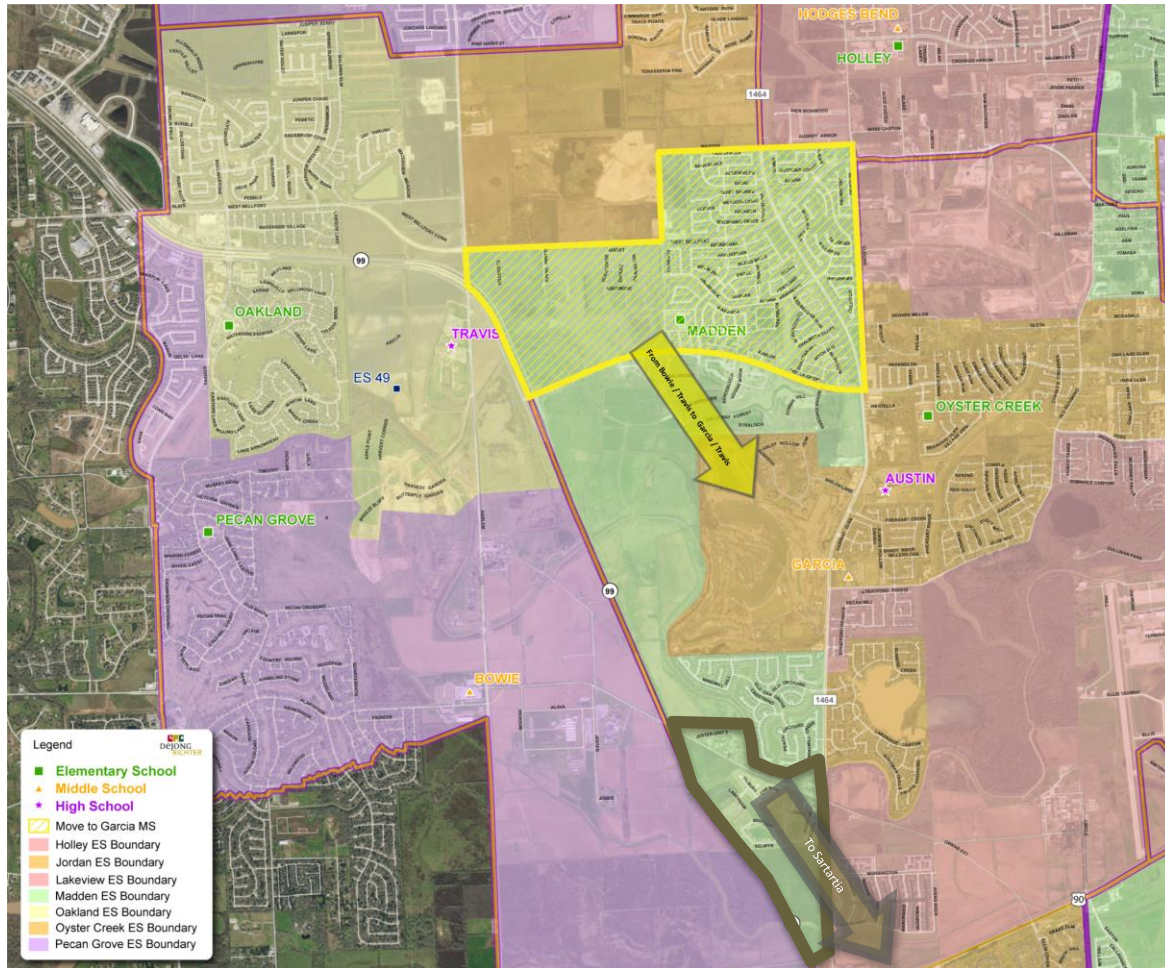
School	Total K-5 Projected Enrollment (Includes Bilingual and ESL)			Future Phase II TBD	Total K-5 Projected Utilization (Includes Bilingual and ESL)			Future Phase II TBD
	2016-17	2017-18	2018-19		2016-17	2017-18	2018-19	
Madden	924	1,007	1,152	Future Phase II TBD	109%	118%	136%	Future Phase II TBD
Oakland	1,265	826	886		166%	108%	116%	
Walker Station	619	720	736		71%	83%	85%	
ES 49	0	594	676			70%	80%	
ES 51	0	0	0					
Total	2,808	3,147	3,450		113%	94%	103%	

Considerations

- Consider placing addition on Oakland.



School	Total K-5 Projected Enrollment (Includes Bilingual and ESL)			Total K-5 Projected Utilization (Includes Bilingual and ESL)		
	2019-20	2020-21	2021-22	2019-20	2020-21	2021-22
Madden	927	930	935	109%	109%	110%
Oakland	918	922	923	120%	121%	121%
ES 49	727	755	777	86%	89%	91%
ES 51	424	518	614	50%	61%	72%
Total	2,996	3,125	3,249	90%	94%	98%



School	Total 6-8 Projected Enrollment						Total 6-8 Projected Utilization					
	2016-17	2017-18	2018-19	2019-20	2020-21	2021-22	2016-17	2017-18	2018-19	2019-20	2020-21	2021-22
Bowie	1,352	1,208	1,261	1,317	1,357	1,388	92%	82%	86%	90%	93%	95%
Garcia	980	1,196	1,224	1,269	1,318	1,357	61%	74%	76%	78%	82%	84%
Sartartia	1,371	1,404	1,354	1,344	1,337	1,322	84%	86%	83%	82%	81%	81%
Total	3,703	3,808	3,839	3,930	4,012	4,067	78%	81%	81%	83%	85%	86%

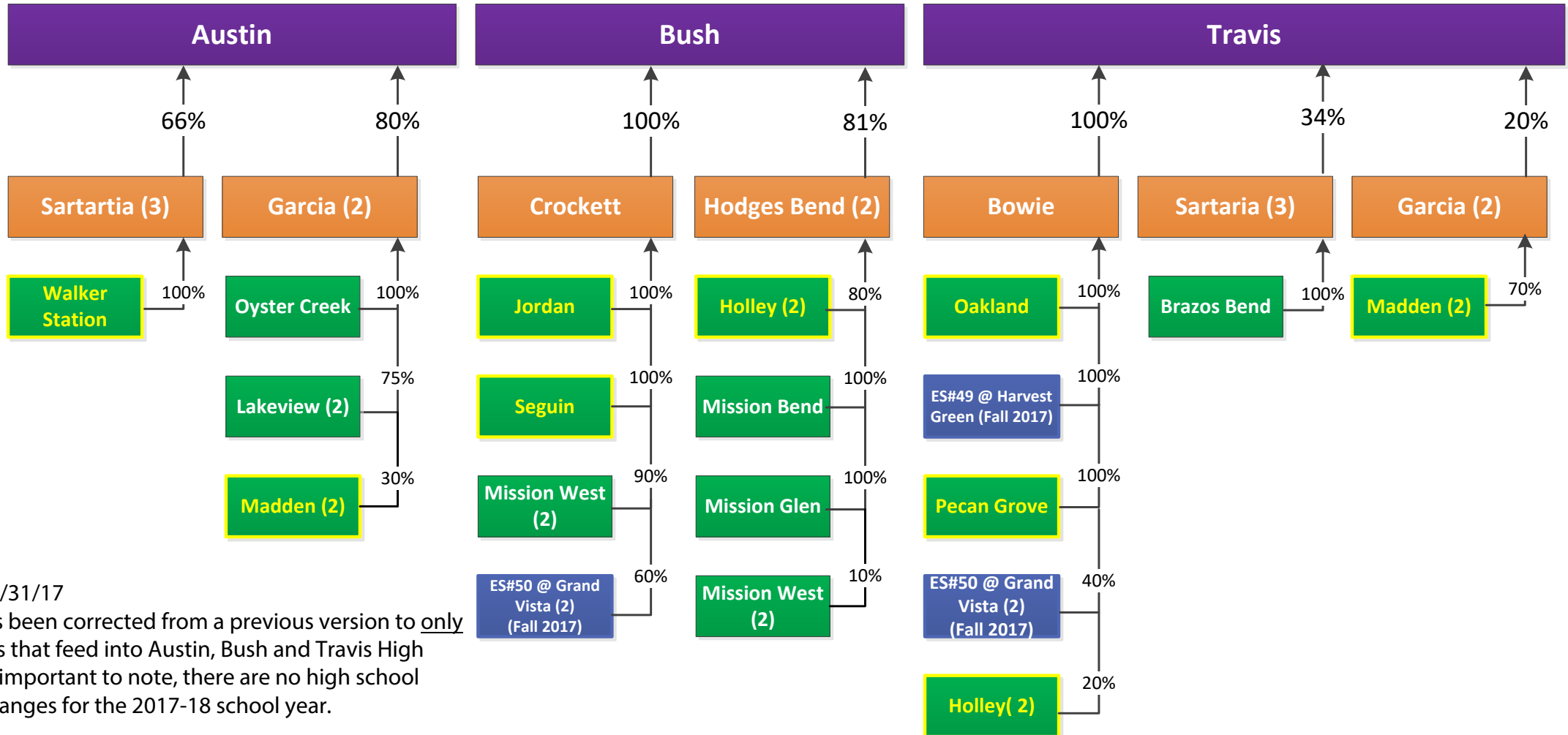
Considerations

- The existing Madden boundary splits between Bowie -> Travis and Garcia -> Austin.
- Bowie is the only middle school that feeds to Travis.
- In 2014, the rational was lets leave them at Bowie since there is room and then consider aligning to Garcia in the future.
- The feeder split moves from middle school to high school.
- The area moving to Walker Station would also move to Sartartia.
- Would change for 2017-18.

Feeder Implications

- Oakland and Pecan Grove will continue to feed 100% to Bowie -> Travis throughout Phases I & II.
- During Phase I, ES 49 and Madden will split between Bowie -> Travis and Garcia -> Austin
- In Phase II, Madden would become a whole school split from Garcia to Travis (Refer to middle school change on previous slide)
- ~~• ES 51 would feed 100% to Garcia and then a small percentage (100 middle school students in ES 51 north of Airport) would split off to Travis while the remaining ES 51 students would feed to Austin.~~

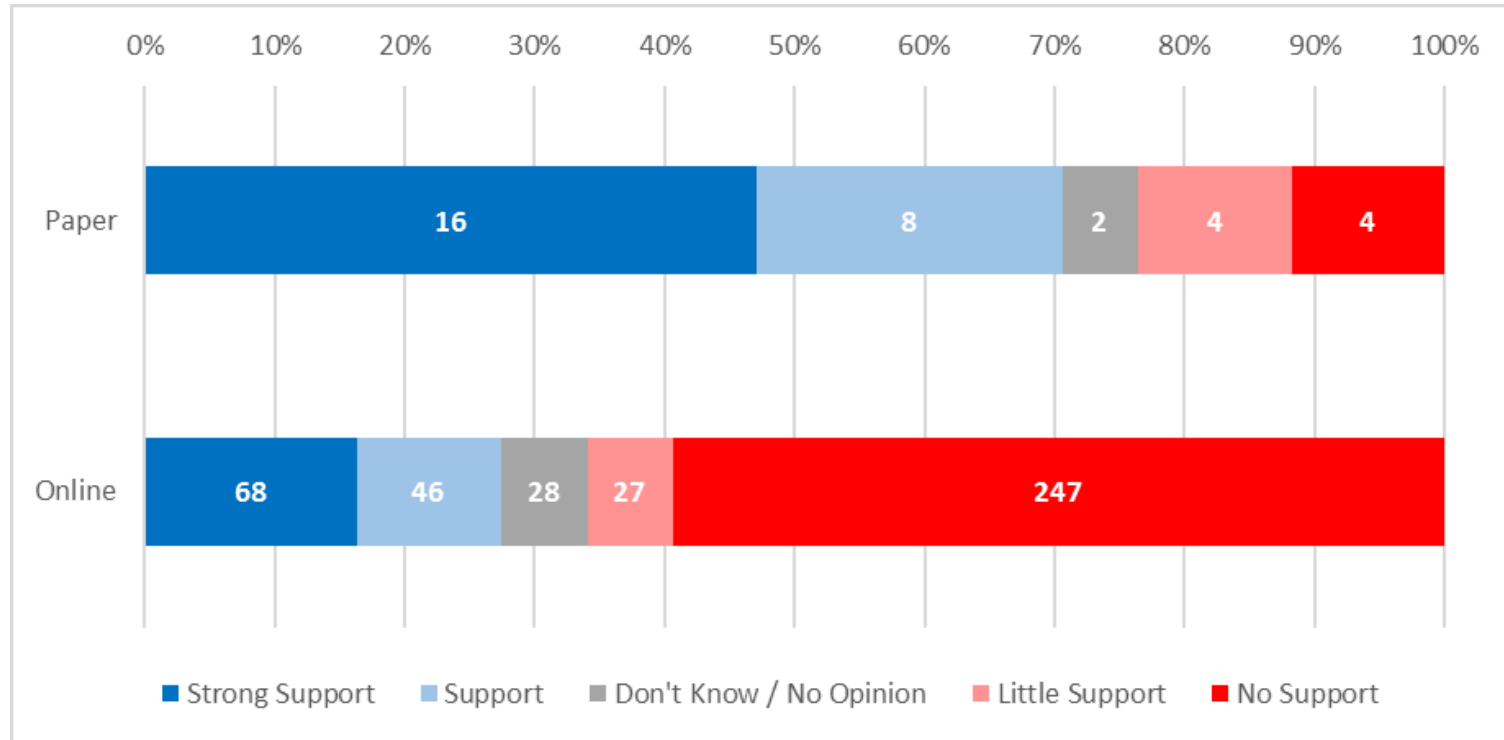
Feeder Implications



** updated 1/31/17

This slide has been corrected from a previous version to only show schools that feed into Austin, Bush and Travis High Schools. It is important to note, there are no high school boundary changes for the 2017-18 school year.

Feedback from Community



Paper: 34
Online: 416

Armstrong (1) **Austin** (100) Baines (1) **Bend** (3) Blue (1)
Bowie (128) burden (1) **Bush** (2) Center (1)
 children (2) **Clements** (2) Cornerstone (1) **Creek** (17)
Crockett (3) **Crossing** (2) currently (1) drop (1) Education (1) Elem (1)
 far (1) **Fleming** (4) **Garcia** (117) **Glen** (2) Green
 (1) **Grove** (21) Harvest (1) hear (1) **Hodges** (2) **Holley** (2)
 home (2) hope (1) **HS** (2) **Hunters** (2) ideal (1) Incoming (1) Jones (1)
Jordan (3) Kempner (1) **kids** (3) Land (1) letting (1)
Madden (291) Meadows (1) **Mission** (2) **None**
 (2) **Oakland** (50) **Oyster** (17) parent (1)
Parkway (4) **Pecan** (21) pick (1) proposal (1) purchased (1)
Quail (2) Ridge (1) route (1) Schiff (1) **schools** (7) Sec (1) **Seguin**
 (2) **Sienna** (2) soon (1) Station (1) students (1) Sugar (1) Technical (1)
 Thank (1) **Travis** (96) unacceptable (1) **Valley** (2)
 vicinity (1) voice (1) Walker (1) West (1) zoned (1)

Prevalent Comments

- **New Facilities need to be constructed sooner.**
- **Concerns around multiple moves for students.**
- **Concerns around not being able to attend closest school.**
- **Concerns around the Garcia -> Travis feeder split. Can this be delayed until Phase II?**

Demographic Impacts

Current

School	American Indian	Asian	Black/African-American	Hawaiian/Pacific Islander	Hispanic	White	Two or More	Free / Reduced
Madden	1%	61%	15%	0%	7%	12%	4%	14%
Oakland	0%	17%	24%	0%	23%	31%	4%	20%
Oyster Creek	0%	32%	21%	0%	21%	21%	4%	39%
Walker Station	0%	46%	5%	0%	9%	32%	7%	6%
ES 49								
Bowie	0%	22%	23%	0%	20%	31%	3%	24%
Garcia	1%	36%	19%	0%	26%	17%	2%	35%
Sartartia	0%	58%	7%	0%	11%	21%	3%	9%

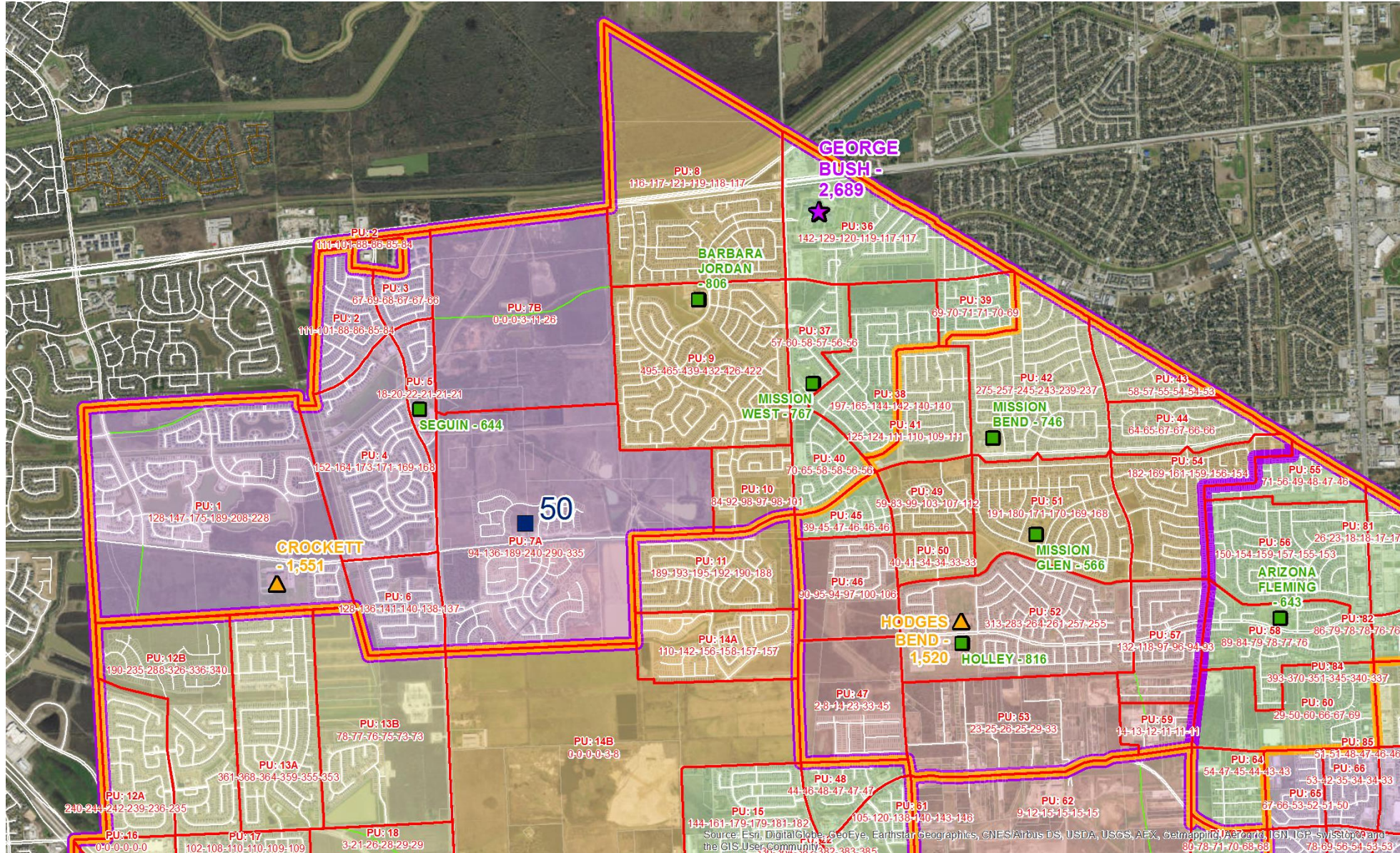
Proposed

School	American Indian	Asian	Black/African-American	Hawaiian/Pacific Islander	Hispanic	White	Two or More	Free / Reduced
Madden	1%	61%	16%	0%	7%	12%	4%	14%
Oakland	0%	16%	22%	1%	22%	36%	4%	17%
Oyster Creek	0%	32%	21%	0%	21%	21%	4%	39%
Walker Station	1%	49%	5%	0%	9%	30%	7%	8%
ES 49	1%	19%	26%	0%	25%	24%	5%	25%
Bowie	0%	14%	24%	0%	23%	34%	4%	25%
Garcia	1%	37%	20%	0%	22%	17%	2%	32%
Sartartia	0%	59%	7%	0%	11%	20%	3%	10%

Note: All demographic figures are based on current enrollment.

Policy FC (LOCAL)

Decision Principles	Aligns with Policy	Rationale
Work toward common feeder patterns throughout the District.	Yes	
Attempt to assign entire neighborhoods to the same school(s).	Yes	
Consider students' proximity to a campus and promote safe and reasonable walking zones to encourage healthier students.	Yes / No	Not every student attends his or her closest school, but we did not create any "bus-the-walkers" attendance zones.
Minimize the number of repeated attendance area changes over a particular time period for a particular school, student, neighborhood, or community.	Yes / No	This is a dynamic area, double-moves are minimal.
Attempt to ensure students zoned to campuses are not moved or negatively impacted when distributing programs among schools.	Yes	
Utilize natural (e.g., creeks, drainage ditches, and the like) and man-made elements as boundaries.	Yes	
Utilize projected student enrollment and capacity as principal measures of determining efficient use of educational facilities.	Yes	
Promote reasonable balancing of enrollment among schools to avoid overutilization or underutilization of facilities.	Yes / No	Madden will continue to become over-utilized, the issue will be addressed through potential capping enrollment and overflowing new students to under-utilized schools.
Consider the unique needs of the student population at a given campus, which may not be reflected in the data alone.	Yes	
Minimize use of temporary classrooms that cause a school to operate at more than capacity.	Yes / No	Will utilize temporaries until additions are complete.
Consider fiscal impact and minimize future capital and operational budget costs.	Yes	
Attempt to maintain diverse populations.	Yes	
Utilize student transportation resources effectively.	Yes	
Consider anticipated construction and residential growth within the community.	Yes	



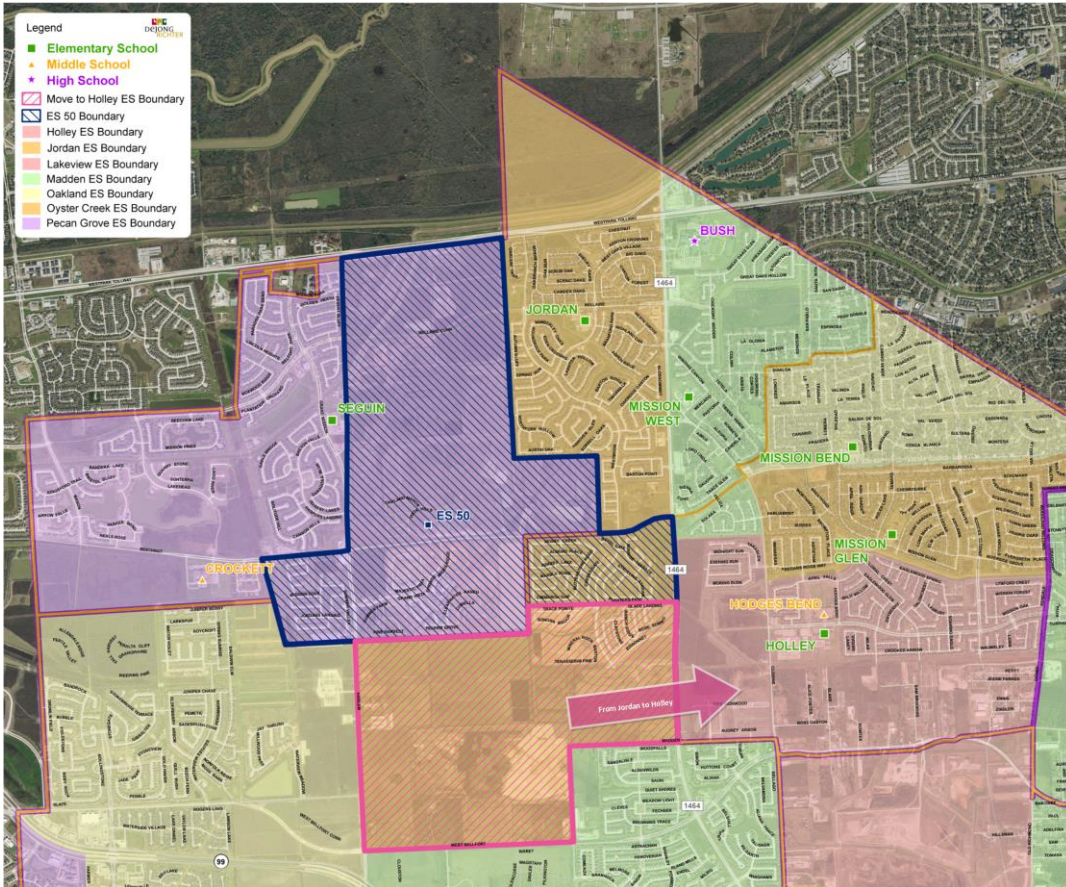
What is happening in this area?

- ES 50 in Grand Vista opens 2017-18
- Addition at Holley comes online in 2017-18

School	Permanent Capacity						Total K-5 Projected Enrollment (Includes Bilingual and ESL)						Total K-5 Projected Utilization (Includes Bilingual and ESL)					
	2016-17	2017-18	2018-19	2019-20	2020-21	2021-22	2016-17	2017-18	2018-19	2019-20	2020-21	2021-22	2016-17	2017-18	2018-19	2019-20	2020-21	2021-22
Holley	576	816	816	816	816	816	583	554	522	528	539	558	101%	68%	64%	65%	66%	68%
Jordan	806	806	806	806	806	806	994	1,009	1,009	998	992	993	123%	125%	125%	124%	123%	123%
Mission West	767	767	767	767	767	767	574	534	498	493	485	484	75%	70%	65%	64%	63%	63%
Seguin	644	644	644	644	644	644	698	773	856	917	989	1,065	108%	120%	133%	142%	154%	165%
ES 50		850	850	850	850	850	0	0	0	0	0	0		0%	0%	0%	0%	0%
Total	2,793	3,883	3,883	3,883	3,883	3,883	2,849	2,870	2,885	2,936	3,005	3,100	102%	74%	74%	76%	77%	80%

Please note: Per policy FC (Local), information above is based on live-in population. September enrollment at Mission West was 658 (86%), Jordan was 910 (113%), Seguin was 769 (119%). This is due to placement of bilingual programs.

Utilization above FC (Local) Utilization Guidelines
 Utilization within FC (Local) Utilization Guidelines
 Utilization below FC (Local) Utilization Guidelines



Considerations

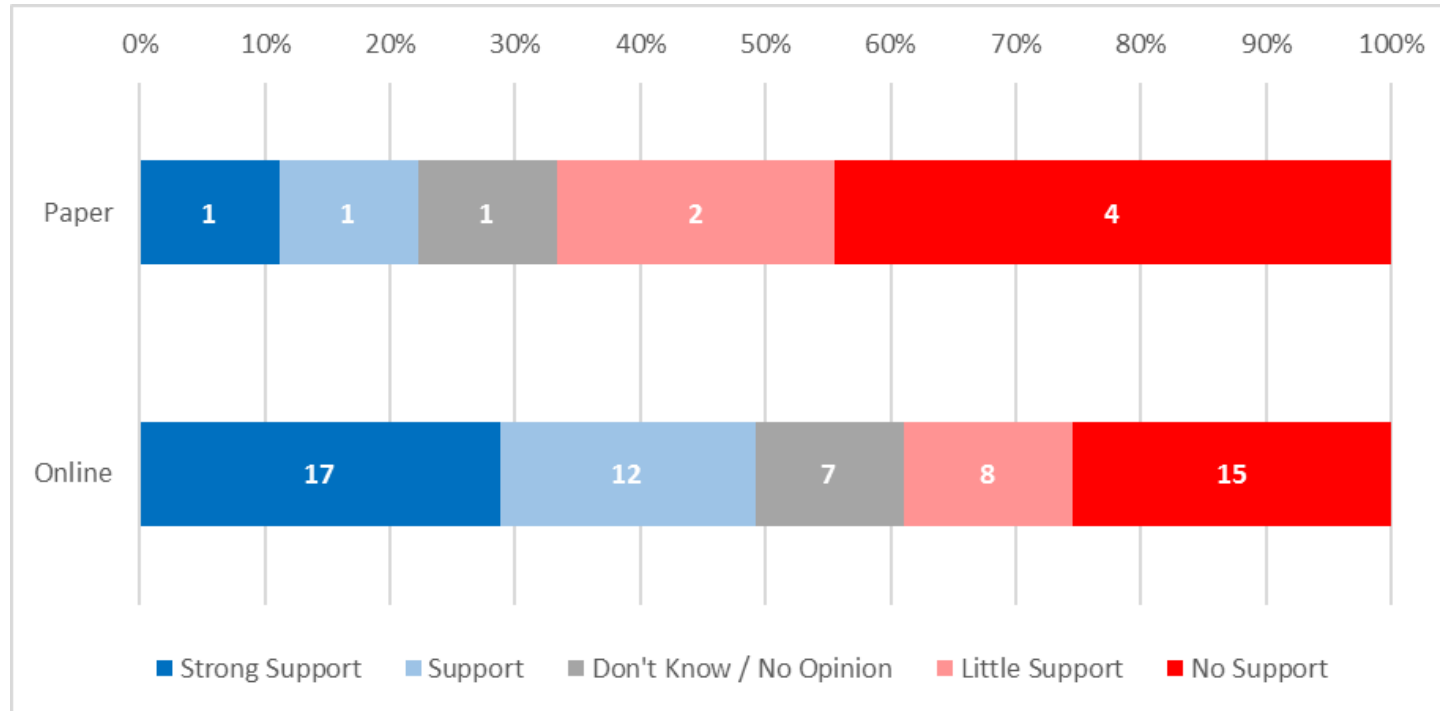
- Jordan currently splits between Crockett -> Bush (75%) and Bowie -> Travis (25%)
- Moving Mission Sierra to ES 50 creates a 100% feeder for Jordan and ES 50 inherits part of the split.
- Moving Mission Trace to Holley increases utilization at Holley, but potentially adds another feeder split.

School	Total 6-8 Projected Enrollment						Total 6-8 Projected Utilization					
	2016-17	2017-18	2018-19	2019-20	2020-21	2021-22	2016-17	2017-18	2018-19	2019-20	2020-21	2021-22
Holley	583	696	678	686	696	715	101%	85%	83%	84%	85%	88%
Jordan	994	674	658	648	642	640	123%	84%	82%	80%	80%	79%
Mission West	574	534	498	493	485	484	75%	70%	65%	64%	63%	63%
Seguin	698	501	526	534	550	567	108%	78%	82%	83%	85%	88%
ES 50	0	465	525	575	629	686		55%	62%	68%	74%	81%
Total	2,849	2,870	2,885	2,936	3,002	3,092	102%	74%	74%	76%	77%	80%

Feeder Implications

- **Jordan currently splits 70% to Crockett -> Bush and 30% to Bowie -> Travis (Mission Sierra and Mission Trace)**
- **Jordan will feed 100% to Crockett -> Bush**
- **ES 50 will feed 58% to Crockett -> Bush and 42% to Bowie -> Travis**
- **Holley will feed 80% to Hodges Bend -> Bush and 19% to Bowie -> Travis**

Feedback from Community



Paper: 9
Online: 59

Baines (2) Bend (1) Blue (1) Bowie (2)
 Bush (3) Clements (1) Crockett (3)
 Crossing (1) Dulles (1) Hodges (1) Holley (1) Jordan
 (4) McAuliffe (1) Point (1) Ridge (2) Schiff (1)
 Seguin (3) Sienna (1) Travis (2)

Prevalent Comments

- Consider moving Mission Trace to ES 50.

Demographic Impacts

Current

School	American Indian	Asian	Black/African-American	Hawaiian/Pacific Islander	Hispanic	White	Two or More	Free / Reduced
Holley	0%	17%	41%	0%	38%	3%	2%	67%
Jordan	1%	23%	39%	0%	28%	5%	4%	51%
Seguin	0%	19%	42%	0%	27%	9%	3%	37%
ES 50								

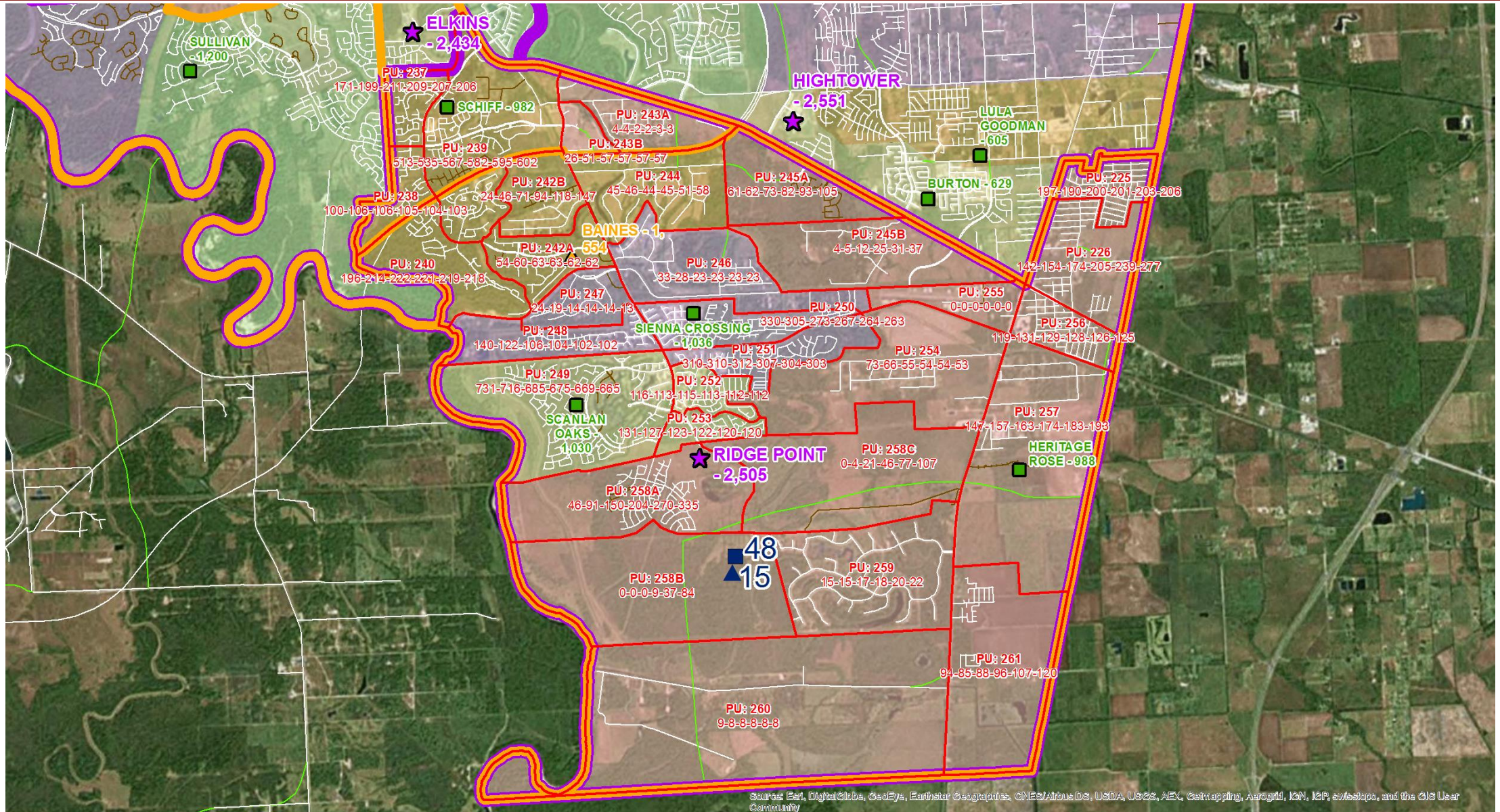
Proposed

School	American Indian	Asian	Black/African-American	Hawaiian/Pacific Islander	Hispanic	White	Two or More	Free / Reduced
Holley	0%	19%	42%	0%	34%	3%	2%	64%
Jordan	1%	20%	37%	0%	33%	7%	4%	54%
Seguin	0%	22%	38%	1%	25%	10%	4%	34%
ES 50	1%	19%	48%	0%	25%	5%	2%	44%

Note: All demographic figures are based on current enrollment.

Policy FC (LOCAL)

Decision Principles	Aligns with Policy	Rationale
Work toward common feeder patterns throughout the District.	Yes / No	Some areas with current low % feeders are left as is; these areas will need to be addressed in a more comprehensive process which may impact high school boundaries.
Attempt to assign entire neighborhoods to the same school(s).	Yes	
Consider students' proximity to a campus and promote safe and reasonable walking zones to encourage healthier students.	Yes / No	Not every student attends his or her closest school, but we did not create any "bus-the-walkers" situations.
Minimize the number of repeated attendance area changes over a particular time period for a particular school, student, neighborhood, or community.	Yes / No	This is a dynamic area, double-moves are minimal.
Attempt to ensure students zoned to campuses are not moved or negatively impacted when distributing programs among schools.	Yes	
Utilize natural (e.g., creeks, drainage ditches, and the like) and man-made elements as boundaries.	Yes	
Utilize projected student enrollment and capacity as principal measures of determining efficient use of educational facilities.	Yes	
Promote reasonable balancing of enrollment among schools to avoid overutilization or underutilization of facilities.	Yes / No	ES 50 may open below capacity.
Consider the unique needs of the student population at a given campus, which may not be reflected in the data alone.	Yes	
Minimize use of temporary classrooms that cause a school to operate at more than capacity.	Yes / No	Will utilize temporaries until additions are complete.
Consider fiscal impact and minimize future capital and operational budget costs.	Yes	
Attempt to maintain diverse populations.	Yes	
Utilize student transportation resources effectively.	Yes	
Consider anticipated construction and residential growth within the community.	Yes	



Source: Esri, DigitalGlobe, GeoEye, Earthstar Geographics, CNES/Airbus DS, USDA, USGS, AEX, Geomatics, AeroGRID, IGN, IGP, swisstopo, and the GIS User Community

What is happening in this area?

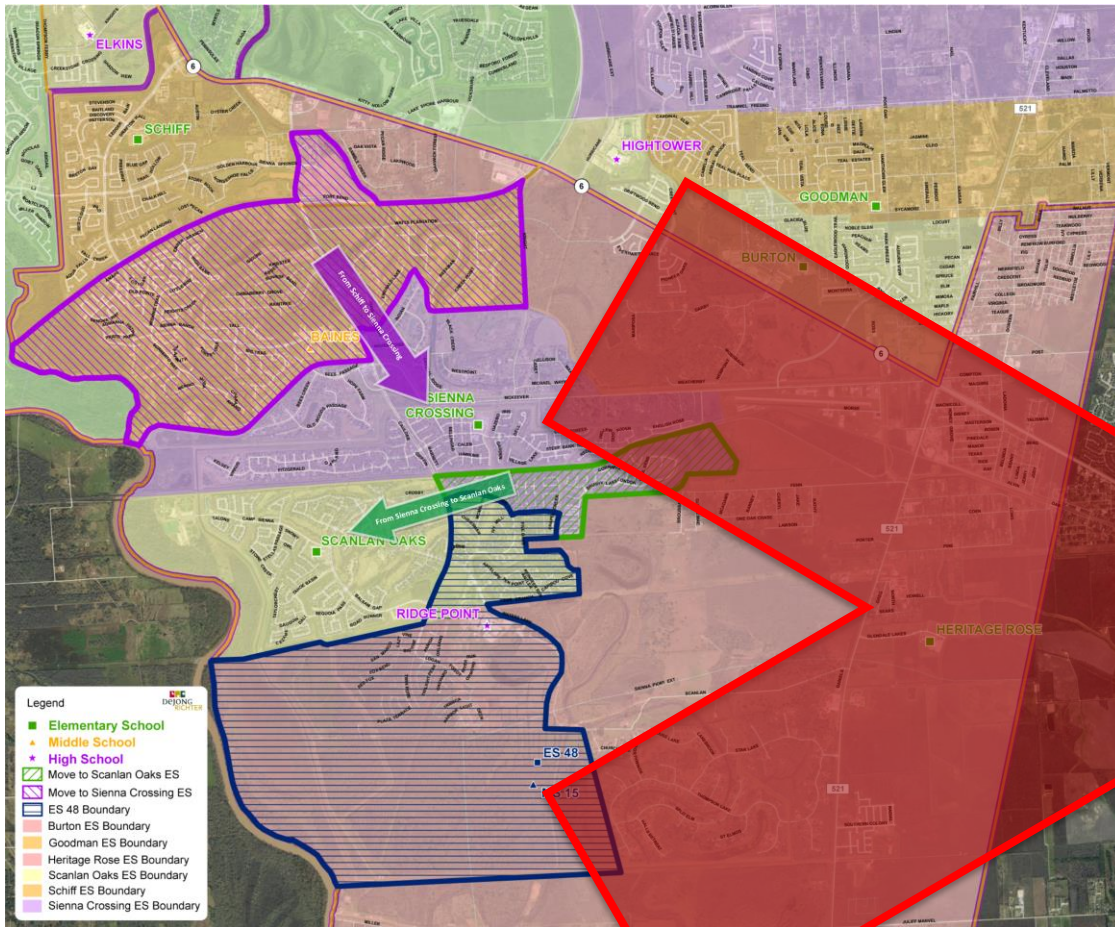
- ES 48 in Sienna South opens 2017-18
- Additions at Schiff, Sienna Crossing, and Scanlan Oaks come online in 2017-18
- Middle School 15 in Sienna South opens in 2018-19
- Paved access to from MS 15 to FM-521 has been committed to and is on schedule to happen in January 2018

What is happening in this area?

Permanent Capacity							Total K-5 Projected Enrollment (Includes Bilingual and ESL)						Total K-5 Projected Utilization (Includes Bilingual and ESL)					
School	2016-17	2017-18	2018-19	2019-20	2020-21	2021-22	2016-17	2017-18	2018-19	2019-20	2020-21	2021-22	2016-17	2017-18	2018-19	2019-20	2020-21	2021-22
Heritage Rose	988	988	988	988	988	988	937	1,023	1,149	1,309	1,508	1,732	95%	104%	116%	132%	153%	175%
Scanlan Oaks	790	1,030	1,030	1,030	1,030	1,030	978	956	923	910	901	897	124%	93%	90%	88%	87%	87%
Schiff	742	982	982	982	982	982	1,256	1,379	1,465	1,498	1,533	1,573	169%	140%	149%	153%	156%	160%
Sienna Crossing	796	1,036	1,036	1,036	1,036	1,036	837	784	728	715	707	704	105%	76%	70%	69%	68%	68%
ES 48		850	850	850	850	850	0	0	0	0	0	0		0%	0%	0%	0%	0%
Total	3,316	4,886	4,886	4,886	4,886	4,886	4,008	4,142	4,265	4,432	4,649	4,906	121%	85%	87%	91%	95%	100%

Permanent Capacity							Total 6-8 Projected Enrollment						Total 6-8 Projected Utilization					
School	2016-17	2017-18	2018-19	2019-20	2020-21	2021-22	2016-17	2017-18	2018-19	2019-20	2020-21	2021-22	2016-17	2017-18	2018-19	2019-20	2020-21	2021-22
Baines	1,554	1,554	1,554	1,554	1,554	1,554	1,785	1,844	1,918	2,006	2,114	2,227	115%	119%	123%	129%	136%	143%
First Colony	1,198	1,198	1,198	1,198	1,198	1,198	1,350	1,367	1,424	1,457	1,473	1,468	113%	114%	119%	122%	123%	123%
MS 15			1,200	1,200	1,200	1,200	0	0	0	0	0	0			0%	0%	0%	0%
Total	2,752	2,752	3,952	3,952	3,952	3,952	3,135	3,211	3,342	3,463	3,587	3,695	114%	117%	85%	88%	91%	93%

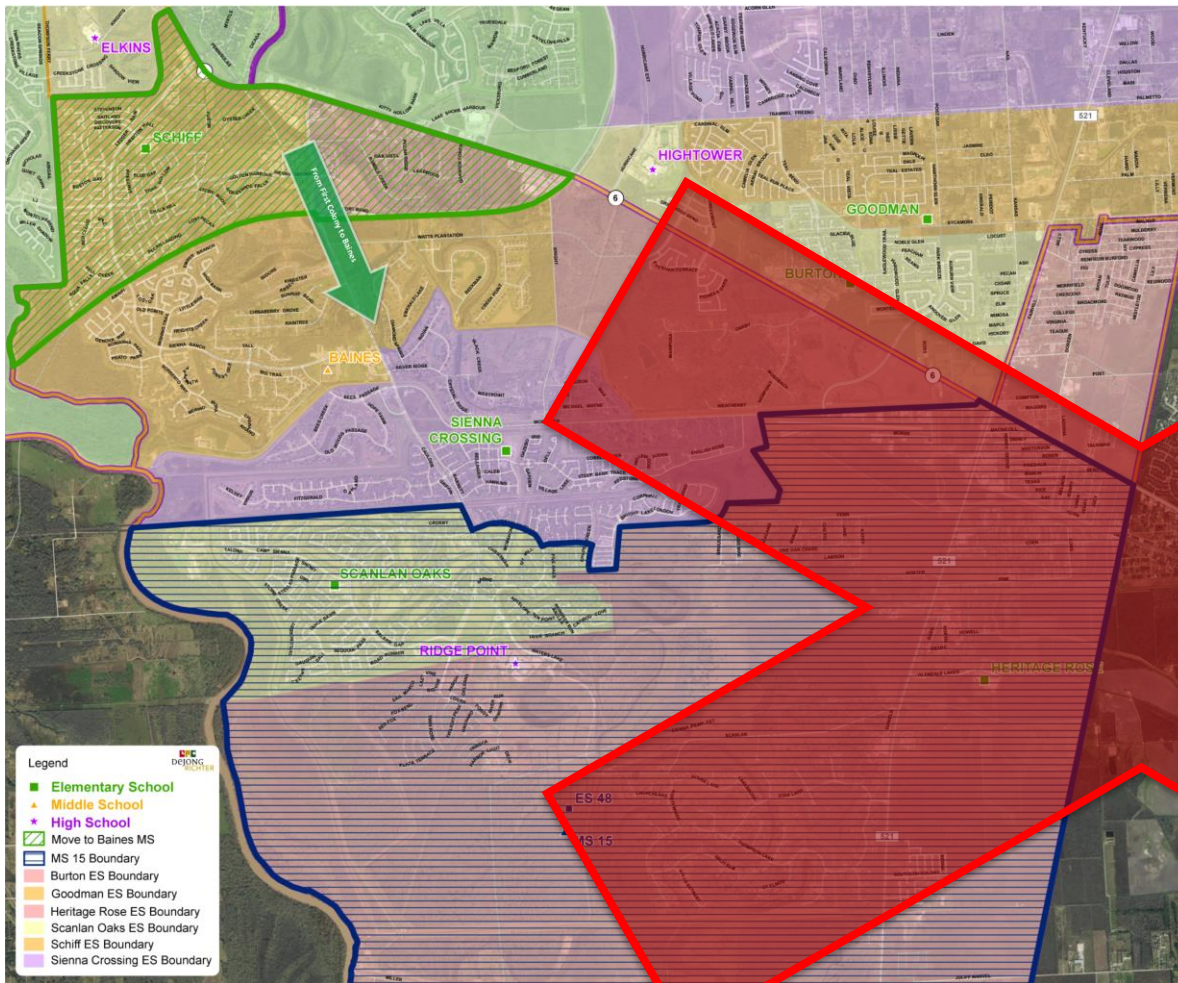
Utilization above FC (Local) Utilization Guidelines
 Utilization within FC (Local) Utilization Guidelines
 Utilization below FC (Local) Utilization Guidelines



Considerations

- Schiff would be defined by the future Fort Bend Toll Road on the south and Sienna Parkway on the east.
- All students leaving Schiff would go to Sienna Crossing
- Since ES 48 opens low, consider moving Bilingual program at Heritage Rose to ES 48 to reduce projected overutilization at Heritage Rose.

School	Total K-5 Projected Enrollment (Includes Bilingual and ESL)						Total K-5 Projected Utilization (Includes Bilingual and ESL)					
	2016-17	2017-18	2018-19	2019-20	2020-21	2021-22	2016-17	2017-18	2018-19	2019-20	2020-21	2021-22
Heritage Rose	937	881	942	1,039	1,144	1,256	95%	89%	95%	105%	116%	127%
Scanlan Oaks	978	1,026	997	982	973	968	124%	100%	97%	95%	94%	94%
Schiff	1,256	840	884	896	906	911	169%	86%	90%	91%	92%	93%
Sienna Crossing	837	1,064	1,054	1,067	1,087	1,120	105%	103%	102%	103%	105%	108%
ES 48	0	331	388	448	539	651		39%	46%	53%	63%	77%
Total	4,008	4,142	4,265	4,432	4,649	4,906	121%	85%	87%	91%	95%	100%



Considerations

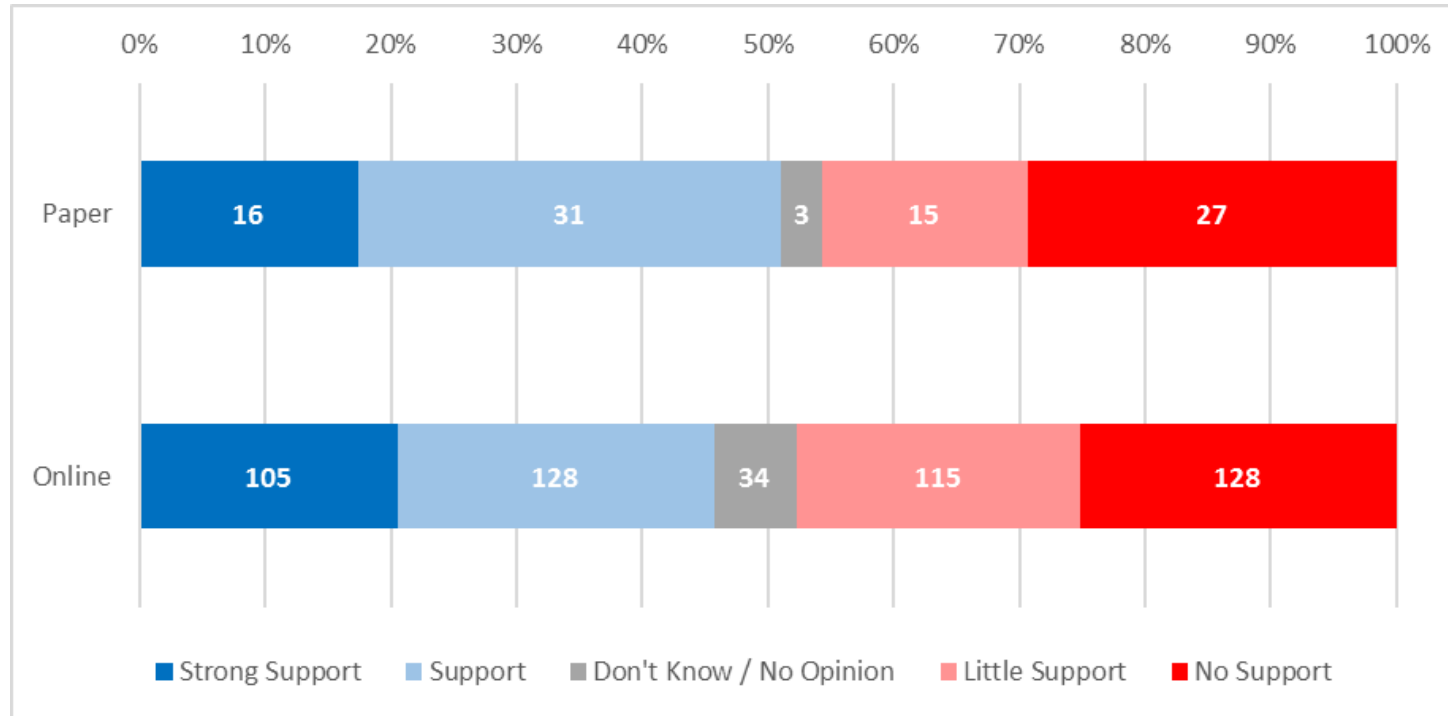
- Baines and First Colony will be overutilized until MS 15 opens in 18-19
- Intended to balance demographics between Baines and MS 15.
- Schiff and Sienna Crossing feed 100% into Baines
- ES 48 feeds 100% into MS 15
- Scanlan Oaks feeds 70% into MS 15 and 30% into Baines.
- Heritage Rose feeds 45% into Baines and 55% into MS 15

School	Total 6-8 Projected Enrollment						Total 6-8 Projected Utilization					
	2016-17	2017-18	2018-19	2019-20	2020-21	2021-22	2016-17	2017-18	2018-19	2019-20	2020-21	2021-22
Baines	1,785	1,844	1,460	1,505	1,548	1,586	115%	119%	94%	97%	100%	102%
First Colony	1,350	1,367	969	994	1,003	997	113%	114%	81%	83%	84%	83%
MS 15			913	964	1,036	1,112			76%	80%	86%	93%
Total	3,135	3,211	3,342	3,463	3,587	3,695	121%	117%	85%	88%	91%	93%

Feeder Implications

- Schiff will no longer feed to First Colony.
- Schiff and Sienna Crossing will feed 100% to Baines.
- ES 48 will feed 100% to MS 15.
- Scanlan Oaks will split between MS 15 -70% (Water's Lake) and Baines – 30% (Shipmans Landing).
- Heritage Rose will split between MS 15 – 55% (Area off FM-521 and south of TX-6) and Baines – 45% (Area off TX-6 and FM-521 north of TX-6).
- The major benefits to splitting Heritage Rose and Scanlan Oaks are the demographic balance between MS 15 and Baines.

Feedback from Community

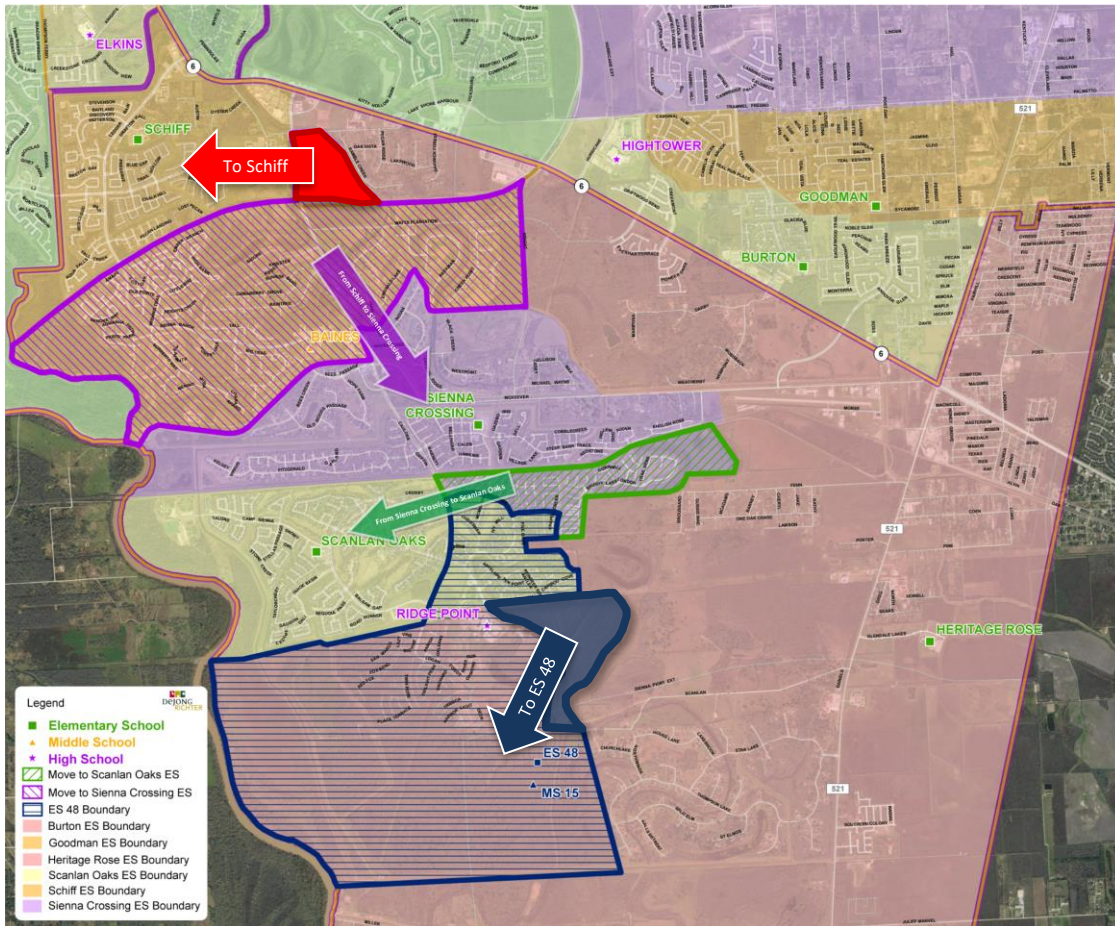


Paper: 92
Online: 510



Prevalent Comments

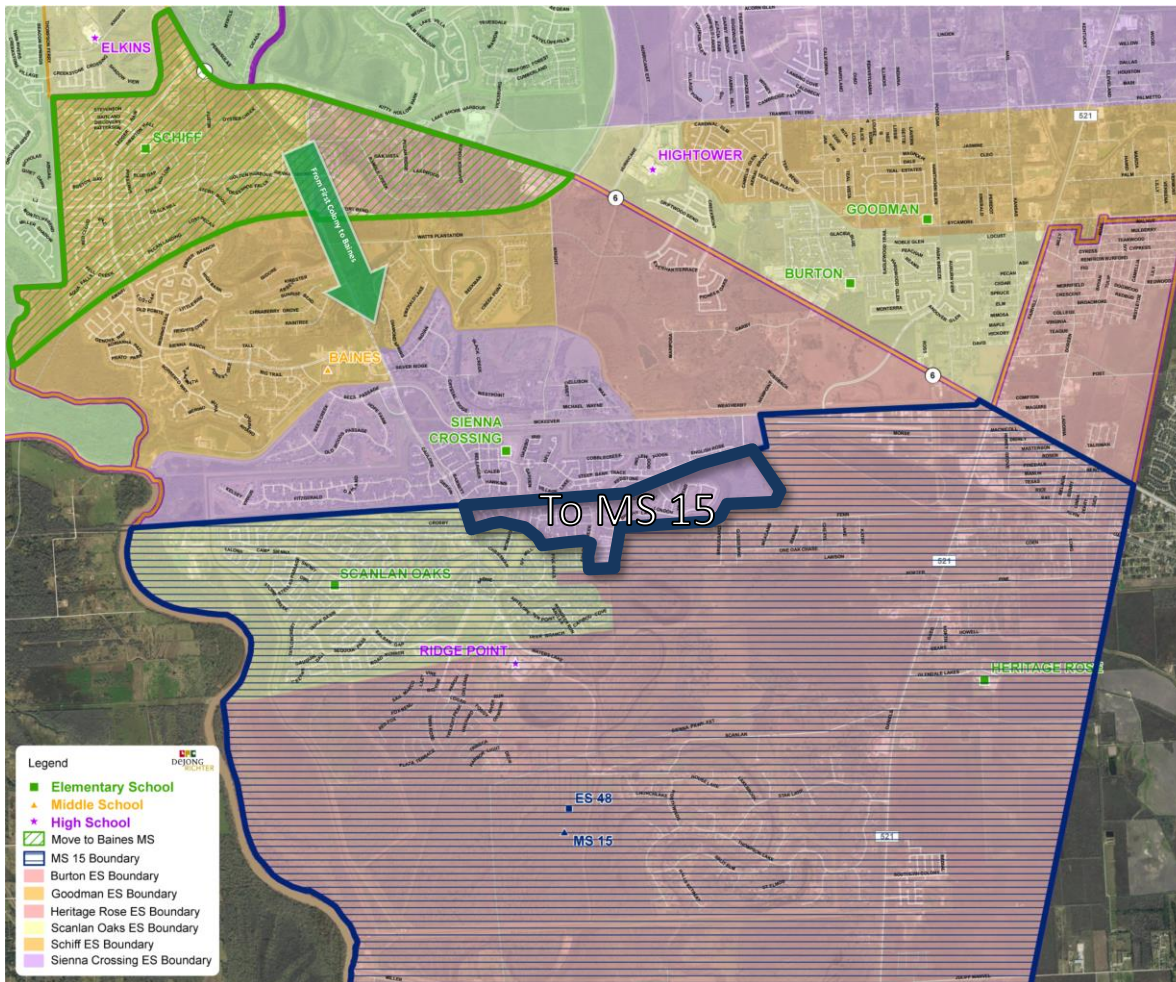
- **Not in favor of splitting Scanlan Oaks between Baines and MS 15.**
- **Sienna Crossing appears to be over utilized while Schiff is under 100%.**
- **Concerns about Ridge Point High School.**



Considerations

- Schiff would be defined by the future Fort Bend Toll Road on the south and Sienna Parkway on the east.
- All students leaving Schiff would go to Sienna Crossing.
- Since ES 48 opens low, consider moving Bilingual program at Heritage Rose to ES 48 to reduce projected overutilization at Heritage Rose (Pending FBISD staff planning).

School	Total K-5 Projected Enrollment (Includes Bilingual and ESL)						Total K-5 Projected Utilization (Includes Bilingual and ESL)					
	2016-17	2017-18	2018-19	2019-20	2020-21	2021-22	2016-17	2017-18	2018-19	2019-20	2020-21	2021-22
Heritage Rose	937	877	921	993	1,067	1,151	95%	89%	93%	101%	108%	116%
Scanlan Oaks	978	1,026	997	982	973	968	124%	100%	97%	95%	94%	94%
Schiff	1,256	891	941	953	963	968	169%	91%	96%	97%	98%	99%
Sienna Crossing	837	1,013	997	1,010	1,030	1,063	105%	98%	96%	97%	99%	103%
ES 48	0	335	409	494	616	755		39%	48%	58%	72%	89%
Total	4,008	4,142	4,265	4,432	4,649	4,906	121%	85%	87%	91%	95%	100%



Considerations

- Baines and First Colony will be overutilized until MS 15 opens in 18-19.
- Intended to balance demographics between Baines and MS 15.
- Schiff and Sienna Crossing feed 100% into Baines.
- ES 48 feeds **and Scanlan Oaks** feed 100% into MS 15.
- ~~Scanlan Oaks feeds 70% into MS 15 and 30% into Baines.~~
- Heritage Rose feeds 45% into Baines and 55% into MS 15.

School	Total 6-8 Projected Enrollment						Total 6-8 Projected Utilization					
	2016-17	2017-18	2018-19	2019-20	2020-21	2021-22	2016-17	2017-18	2018-19	2019-20	2020-21	2021-22
Baines	1,785	1,844	1,307	1,354	1,398	1,438	115%	119%	84%	87%	90%	93%
First Colony	1,350	1,367	969	994	1,003	997	113%	114%	81%	83%	84%	83%
MS 15			1,055	1,091	1,146	1,206			88%	91%	96%	101%
Total	3,135	3,211	3,331	3,439	3,547	3,641	121%	117%	84%	87%	90%	92%

Demographic Impacts

Current

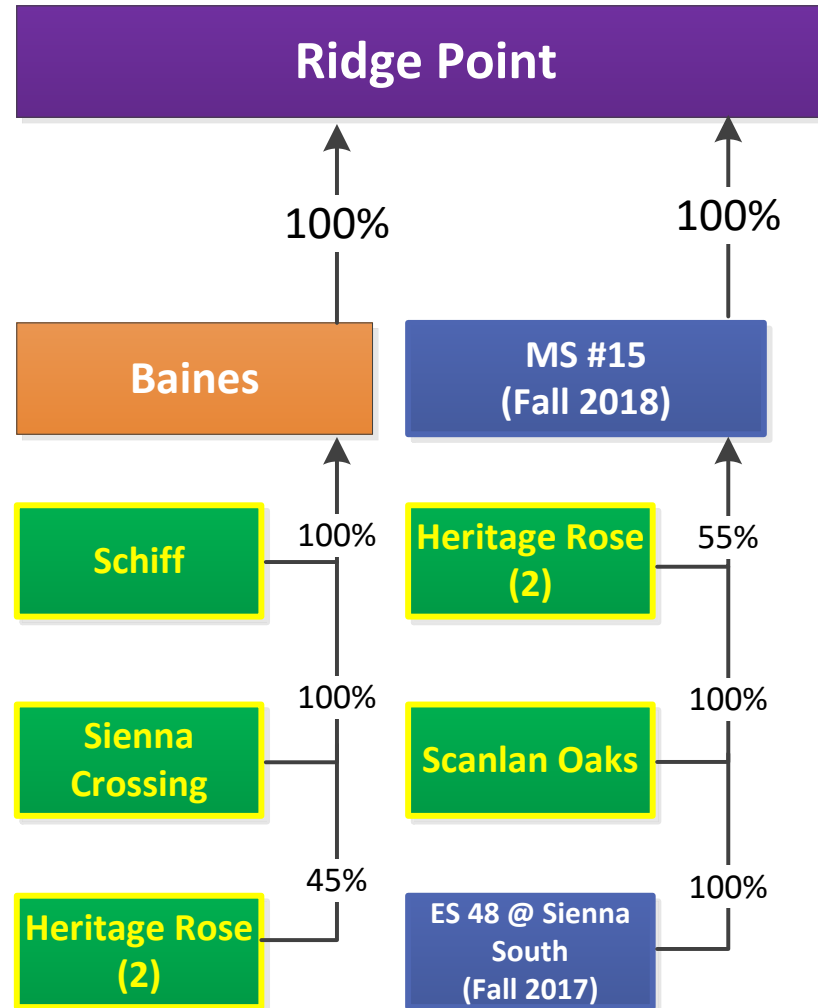
School	American Indian	Asian	Black/African-American	Hawaiian/Pacific Islander	Hispanic	White	Two or More	Free / Reduced
Heritage Rose	1%	2%	19%	0%	70%	6%	2%	72%
Scanlan Oaks	0%	8%	14%	0%	11%	59%	6%	4%
Schiff	0%	35%	18%	0%	12%	31%	3%	10%
Sienna Crossing	0%	8%	16%	0%	16%	54%	6%	7%
ES 48								
Baines	0%	9%	18%	0%	30%	40%	4%	24%
First Colony	0%	42%	16%	0%	14%	23%	4%	16%
MS 15								

Proposed

School	American Indian	Asian	Black/African-American	Hawaiian/Pacific Islander	Hispanic	White	Two or More	Free / Reduced
Heritage Rose	1%	1%	17%	0%	75%	5%	1%	76%
Scanlan Oaks	0%	9%	14%	0%	11%	60%	6%	3%
Schiff	1%	43%	20%	0%	12%	22%	3%	14%
Sienna Crossing	0%	14%	17%	0%	14%	49%	5%	7%
ES 48	0%	8%	20%	1%	17%	48%	6%	8%
Baines	0%	19%	22%	0%	26%	29%	3%	24%
First Colony	0%	44%	10%	0%	15%	26%	5%	16%
MS 15	0%	8%	18%	0%	28%	43%	4%	21%

Note: All demographic figures are based on current enrollment.

Feeder Implications



Policy FC (LOCAL)

Decision Principles	Aligns with Policy	Rationale
Work toward common feeder patterns throughout the District.	Yes	
Attempt to assign entire neighborhoods to the same school(s).	Yes / No	Shipman's Landing is currently split between Scanlan Oaks and Sienna Crossing; they will continue to split, but between Scanlan Oaks and ES 48.
Consider students' proximity to a campus and promote safe and reasonable walking zones to encourage healthier students.	Yes / No	Not every student attends his or her closest school, but we did not create any "bus-the-walkers" situations.
Minimize the number of repeated attendance area changes over a particular time period for a particular school, student, neighborhood, or community.	Yes / No	This is a dynamic area, double-moves are minimal.
Attempt to ensure students zoned to campuses are not moved or negatively impacted when distributing programs among schools.	Yes	
Utilize natural (e.g., creeks, drainage ditches, and the like) and man-made elements as boundaries.	Yes	
Utilize projected student enrollment and capacity as principal measures of determining efficient use of educational facilities.	Yes	
Promote reasonable balancing of enrollment among schools to avoid overutilization or underutilization of facilities.	Yes / No	ES 48 may open below capacity.
Consider the unique needs of the student population at a given campus, which may not be reflected in the data alone.	Yes	
Minimize use of temporary classrooms that cause a school to operate at more than capacity.	Yes / No	Will utilize temporaries until additions are complete.
Consider fiscal impact and minimize future capital and operational budget costs.	Yes	
Attempt to maintain diverse populations.	Yes	
Utilize student transportation resources effectively.	Yes	
Consider anticipated construction and residential growth within the community.	Yes	

Next Steps

- Develop boundary change maps for January 23 Board action.
- Update feeder pattern documentation.